

JESUS NYE MISSION SYDNEY

Mission Partner Invitation

"One thing have I desired of the Lord, that will I seek after; that I may dwell in the house of the Lord all the days of my life, to behold the beauty of the Lord, and to enquire in his temple."

Psalm 27:4

A CAMPAIGN OF

A U S T R A L I A
Jesus loves



The Invitation

"The harvest truly is plenteous, but the labourers are few; Pray ye therefore the Lord of the harvest, that he will send forth labourers into his harvest."

Matthew 9:37-38

There is a cry going up at the end of 2026, and an altar being raised at the threshold of 2027.

On New Year's Eve, the eyes of the world will be on Sydney's harbor, the most-watched horizon on earth that night. In the heart of Western Sydney, a stadium will become a public altar, and a city will be called into the beauty of the Lord.

We are writing to invite you — missionaries, evangelists, intercessors, worshippers and mission teams from across the nations — to come and be part of it. Not as visitors. Not as event volunteers. **As bridal awakeners.**

Between Christmas and the turning of the year, you would live for a week inside one local Sydney church family. You would serve that pastor's vision for their own community. You would walk Sydney's streets, knock on Sydney's doors, sit at Sydney's tables, and carry the gospel face to face into a city that needs to hear the Bridegroom's name. Then you would fly home with the daily altar in your hands and the awakening in your heart, and continue in your own city what God did in this one.

Jesus NYE and Mission Sydney is a campaign of Jesus Loves Australia, the ministry that carried the Jesus Loves Australia 2018 gospel campaign at this same stadium. This document is the invitation, and the practical detail behind it, so that you and your ministry can pray and decide with clear eyes. The Bride is being awakened across the earth. Sydney is one of her altars. Come.

✔ **In Christ**, Shane Degen, Founding Director, Jesus NYE and Mission Sydney.

A New Horizon for the Bride

"She is fair as the moon, clear as the sun, and terrible as an army with banners."

Song of Songs 6:10

This is a moment in history. Across continents the Spirit of God is moving in ways our generation has not seen. Hundreds of thousands are gathering for prayer, worship and fasting. A longing has risen in a whole generation — not for religion and not for performance, but for Jesus Himself.

We believe this is the third great move of God in three centuries — these mirror the Book of Revelation:

The Third Move — Now

Jesus as the **Bridegroom**. His Church awakened as a Bride: intimate, royal and warrior — all three at once. A generation arising with a heart after God, seeking deep relationship and closeness with Him.

The Second Great Awakening

An army of prayer, evangelism and discipleship. Jesus known as the **Warrior King** and the church as His army — His soldiers.

The First Great Awakening

Preached salvation and filled a city — the New Jerusalem — with citizens. Jesus became known as **King**.

Jesus NYE exists to serve that move of God. The year 2027 is the year of Psalm 27, and the cry of that psalm is the heartbeat of this campaign: *one thing have I desired of the Lord, that I may behold His beauty*. A missionary who comes to Mission Sydney comes to serve that one desire — Jesus — lifted over a city.



Come as Bridal Awakeners, Not Visitors

There is a way to come to a city that blesses it, and a way that strains it. Jesus NYE asks every mission partner to come a particular way.

✗ Not a Visiting Platform

You are not coming to build a platform, gather a crowd to yourself, or run your own program in someone else's city. You are coming as a friend of the Bridegroom, to make Him known and to make the local church strong.

✗ Not a Parallel Campaign

You will not run a parallel campaign alongside the local church. You will embed within one host church and serve the vision its pastor already carries for their own community — their neighborhood, their relationships, their long-term harvest.

✓ A Bridal Awakener

A bridal awakener carries two things at once: deep intimacy with Jesus, and bold love for the lost. You begin each day at the altar, beholding His beauty, and you go out from that altar into the streets.

*Worship that never reaches the lost turns inward.
Mission that does not begin in love turns mechanical.
You are invited to carry both, and to leave both behind
in the churches you serve.*

Come to serve as a friend of the Bridegroom.



The Embedded Model: One Church, One Week

Jesus NYE is built around one specific mechanism. Understanding it is the key to understanding your role.

Most local church pastors carry a real burden for the community outside their walls, but spend the bulk of every week sustaining what already exists. They rarely have the room to pioneer fresh outreach into their own neighborhood.

1

You Arrive

Live with one host church family for seven days. Take the pioneering load off the pastor and staff.

2

You Activate

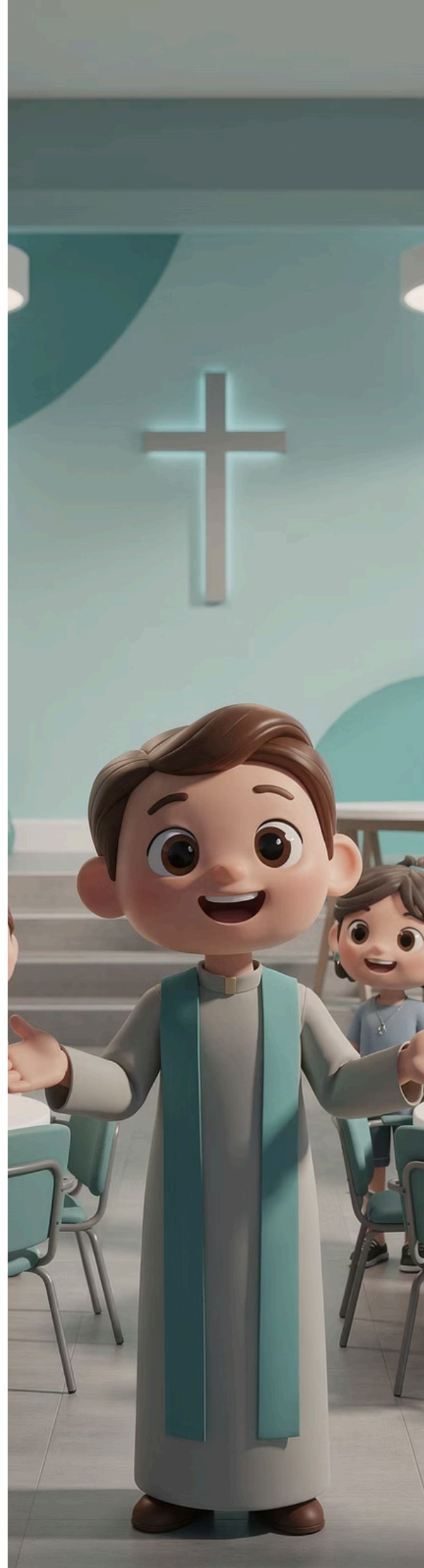
Help the church develop outreach that fits its own community. Mobilize the congregation outward with training and momentum they could not generate alone.

3

You Leave Fruit

The pastor is left standing in turned soil with gospel seeds planted — a congregation in motion, conversations opened, responders already in the church's care.

You are not the harvest's owner. You are the friend who helps turn the soil, and then hands the field back to the church that will tend it.





Who We Are Inviting

Jesus NYE carries a global invitation. The campaign is mobilizing thousands of missionaries, evangelists, intercessors, worshippers and believers from around the world. Whether you come as an individual missionary, a team, or a sending ministry, there is a place for you in Mission Sydney.

Partner Type	How You Would Serve
Evangelistic Ministries	Provide trainers, outreach models, evangelists, team leaders and field-tested gospel tools.
Mission Teams	Come willing to serve another's church reach their community.
Youth Groups	Bring your youth because there are other young people who need the zeal you carry for Jesus.
Mission Agencies	Send teams, support training, provide cross-cultural wisdom and help mobilize international participants.
Prayer Movements	Build intercession, prayer rooms, watches and spiritual covering across the campaign.
Worship Movements	Support worship leadership, daily altars, prayer room ministry and stadium worship culture.
Discipleship Movements	Provide simple, reproducible pathways for new believers, follow-up and disciple-making.
Youth & Campus Ministries	Mobilize young adults, students and university outreach teams.
Multicultural Networks	Support language-specific outreach, ethnic church mobilization and culturally aware follow-up.

Matched to a Church That Fits Your Gifts

Jesus NYE wants every missionary and every team serving where their gifts land best. Placement is not random, and it is not first-come. It is a careful, prayerful match between a team and a church, worked through from both sides.



You Tell Us How You Serve Best

When you register, you share your team's gifts, your experience, the kinds of outreach you carry well, and how you have best served local churches before — street evangelism, prayer and worship, youth and schools, discipleship, practical service or cross-cultural mission.



Churches Tell Us Their Vision

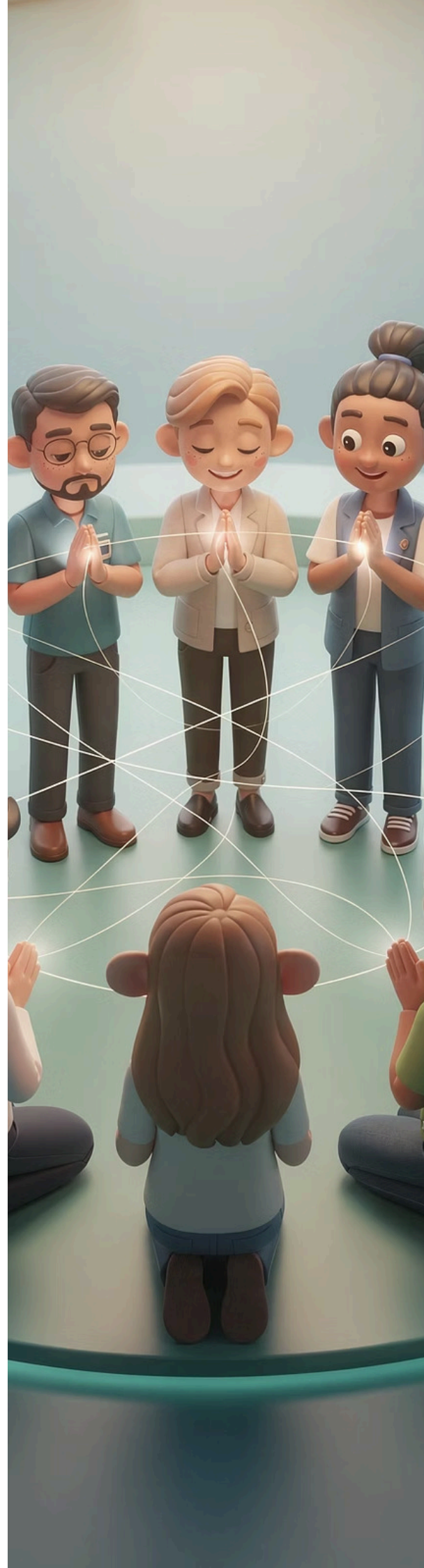
Every partnering church is engaged by a Church Development Officer who listens to the pastor's vision and heart for reaching their community. The campaign holds the church's vision on one side and the gifts of available teams on the other.



The Campaign Aligns the Two

Teams are aligned to host churches where their gifts will serve the pastor's vision most fruitfully. An evangelism-gifted team is sent to a church longing to reach its streets; a prayer team to a church building a house of prayer; a youth team to a church carrying a burden for its schools.

- ✔ Come as you are gifted. You will be sent where those gifts can serve.





Mission Sydney: The Daily Rhythm

Mission Sydney is the week between Christmas and New Year's Eve when the city is saturated with prayer, worship and the gospel. Your days follow a steady rhythm of encounter and mission, beginning and ending at the altar.

The Daily Structure

01

Morning Altar

Prayer, worship, Scripture and team commissioning at the hub. Beholding His beauty before the work begins.

03

Daytime Outreach

Teams go into streets, homes, parks, schools and gathering places, sharing the love and gospel of Jesus face to face.

05

Evening Worship & Debrief

Worship, testimonies, thanksgiving, reporting and next-day instructions.

02

Training & Briefing

Outreach focus for the day, safety briefing, zone assignments and a refresh on gospel tools.

04

Afternoon Check-In

Team leader updates, pastoral care, logistics support and encouragement.

06

Night Prayer Covering

Intercession carried through the night for the harvest, the teams and the city.

How the City Is Reached

Within Mission Sydney, missionaries serve through multiple streams matched to their gifts and the host church's community.

- Street evangelism
- Prayer stations
- Neighborhood and home outreach
- Practical community service
- Multicultural outreach
- Youth and university outreach
- Digital response

Hubs, Zones & Teams

You would be based at a hub — usually a host church — and deployed into a defined zone alongside that church's own members. You would always serve in teams under an appointed team leader, never alone. This structure keeps you close to the church you serve, and keeps the harvest connected to the church that will disciple it.



The Missionary Journey: From Invitation to Sending

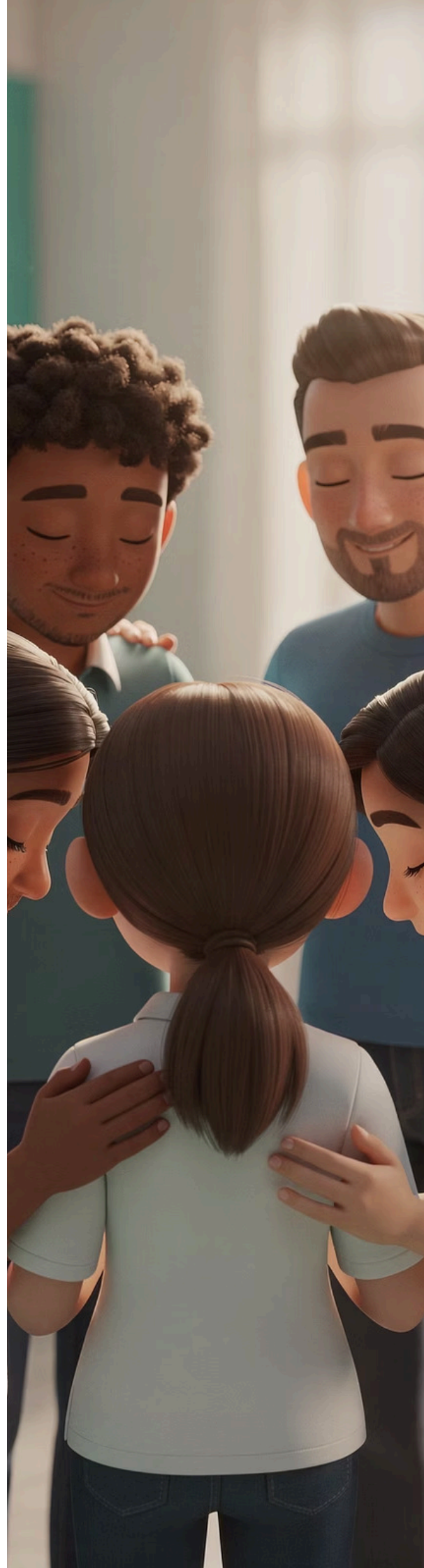
From the first invitation to the day you fly home, the journey has nine clear steps. Every step is supported by the campaign team.



Conduct and Culture

Every mission partner serves under a shared culture. It protects the host church, the city and the witness of Jesus — and it is simply the culture of a bridal awakener.

- Come to serve, not to dominate — a friend of the Bridegroom, not a celebrity in the city.
- Honor the host pastor, the host church and the local leaders you serve. Their vision for their community shapes the week, not yours.
- Begin in prayer, worship and the word (morning devotions) before public activity.
- Share the gospel clearly and lovingly.
- Operate in teams and under appointed team leaders.
- Respect local law, venue rules, public space restrictions and campaign policies.
- Do not use outreach for personal platform building, fundraising or unapproved ministry promotion.
- Report outcomes honestly and protect personal information.
- Refer pastoral, safeguarding or complex needs to the right leaders quickly.
- Carry the daily altar DNA home after the campaign.



What Is Involved: The Practical Detail

So that you and your ministry can pray and plan with clear information, here is the practical shape of coming to Mission Sydney. Every detail below is confirmed individually with each registered partner before commitment.

When

Mission Sydney runs the week between Christmas and New Year's Eve 2026, with the stadium gathering on New Year's Eve and outreach continuing on New Year's Day. Most missionaries would arrive a few days early to settle, orient and train, and we encourage staying through New Year's Day.

Training

Every missionary completes campaign orientation covering the gospel approach, the embedded-church posture, conduct, safety, reporting and local church partnership. Training is provided by the campaign, in person and online, before deployment.

Accommodation

The campaign's preferred model is billeting and hosting through approved local churches, supported by clear guidelines. You are welcome to stay at hotels or rental accommodation if you prefer. Accommodation is coordinated with your placement, and you will know where you are staying before you travel.

Costs & Support

Missionaries and sending ministries are generally responsible for their own international and domestic travel. The campaign coordinates training, placement, hub operations and in-field logistics, and partial travel subsidies may be available in specific cases. Costs and any support are confirmed individually during registration.

Screening & Safeguarding

Because Mission Sydney engages public spaces, families and young people, every missionary is screened according to role and jurisdiction and accepts the campaign code of conduct. Teams applying together provide team leader details. This protects everyone the campaign touches.

What to Bring

A servant heart, a willingness to be led by a local pastor, a love for the lost, and a daily altar you fully intend to carry home.



You Are Joining Something Already Moving

This is not a campaign waiting to begin. The founding team is gathered and the doors are open. When you come to Sydney, you are joining a force the Lord is already drawing from the nations.

17K

Decisions for Christ

Recorded by Messengers Global across Los Angeles in a single week during the Azusa 120 campaign.

55

Ministries United

Reaching Australia 2033 coalition, representing close to 80% of the nation's active church attendance, has come alongside the campaign.

2018

Proven Altar

The Jesus Loves Australia 2018 campaign at this same stadium saw missionaries mobilized into lifelong service and a house of prayer planted in the city.

A Pledged Force

Messengers Global has already pledged several hundred United States missionaries to Sydney.

A National Coalition

Reaching Australia 2033 — 55 ministries representing ~80% of the nation's active church attendance — has come alongside the campaign.

A Global Partnership

JC2033, mobilizing the global church toward Resurrection Day 2033, is partnering with a campaign built to leave a city a year of fruit to cultivate.

A Proven Altar

Jesus NYE and Mission Sydney are hosted by Jesus Loves Australia — the same ministry, the same stadium, the second and larger campaign raised at that same altar.

What You Carry Home

Mission Sydney is not the end of your journey. It is a commissioning.

You would arrive to serve a city, and you would leave having received something to carry.

1 The Daily Altar

1

Morning and evening encounter with Jesus — beholding His beauty before going out to His work. A rhythm you take home and continue.

2 The Embedded Model

2

A way of strengthening the local church rather than competing with it — a posture of service you carry into every future mission.

3 The Awakening

3

The bridal DNA of intimacy that overflows into mission. The midnight cry for every city. Sydney is one altar among many the Lord is raising across the earth.

We are asking missionaries to come, and then to go home and begin in their own cities what God has started in Sydney.

"Also I heard the voice of the Lord, saying, Whom shall I send, and who will go for us? Then said I, Here am I; send me."

Isaiah 6:8





Your Next Step

However the Lord is leading you or your ministry, here is how to take the next step. Every question is welcome, and nothing is committed until you are ready.

If You Sense...	Your Next Step
We can send missionaries	Book a mission partner call and receive the missionary mobilization pack and registration details.
We can provide training	Submit your training approach and identify trainers available for pre-campaign or Mission Sydney.
We can support prayer and worship	Join the prayer and worship planning and identify teams, leaders or prayer room capacity.
We can support follow-up	Discuss discipleship tools, team leaders and the local church integration model.
We can give	Become a financial partner through a monthly or one-off gift at jesusnye.com .
We need clarity before committing	Review the code of conduct, training requirements, accommodation and the partnership framework with the team.

i Every question is welcome. Nothing is committed until you are ready. The campaign team is here to walk with you through every step of discernment.

Partnering Financially

Mission Sydney is also carried by financial partners. Alongside those who come and those who send, the campaign is sustained by churches, ministries and individuals who give.

Ways to Give

Monthly Partners

Give a recurring gift across the campaign year, sustaining the work from now through New Year's Eve 2026.

One-Off Gifts

Give any amount at any time. Every gift is stewarded with financial discipline and transparent reporting.

To give or set up a monthly partnership, visit jesusnye.com.

Begin a Conversation

We would be honored to speak and pray with you or your ministry, and to answer every question before anything is committed. Contact the Founding Director or the Global Mobilization team to arrange a time to talk and pray.

Shane Degen, Founding Director

Jesus NYE and Mission Sydney, a campaign of Jesus Loves Australia

✉ shane@jesuslovesaustralia.com

☎ +61 405 812 060 (Australia)

☎ +1 469 588 2030 (United States)

🌐 jesusnye.com

*The Bride is being awakened across the earth. Sydney is one of her altars.
Come.*

A CAMPAIGN OF JESUS LOVES AUSTRALIA

A U S T R A L I A
Jesus loves